

Empty Can Inspection

The Empty Can Inspection system is able to detect defects quickly and accurate on the flange, bottom and the inner sidewalls of the can. Pollution and spots inside, as well as flange dents, flange width and ovality/roundness are being detected. The Empty Can Inspection system inspects up to 90.000 cans per hour. The system is compact and can easily be installed on existing and new lines.



Accuracy:	~0.5-2 mm2*
Ratios:	Detection reliability: 99-99,9%* False reject rate: 0,1 – 0,01%*
Speed:	90.000 products per hour with a sociated conveyorspeed.**
Type of packaging:	<ul style="list-style-type: none"> Cans. Optimized for infant formula cans with \varnothing99 mm and \varnothing127mm.
Certifications & ratios:	<ul style="list-style-type: none"> Low Voltage Directive 2006/95/EC Electromagnetic Compatibility Directive 2004/108/EC

Mechanical information

Weight of optical unit 62 kilo
Dimensions optical unit 380x380x300mm LxWxH

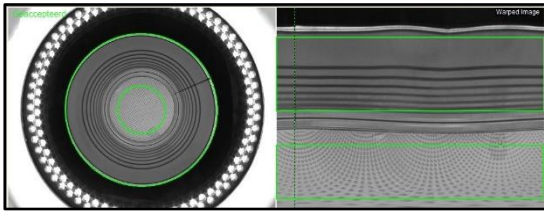
*depending position on the can and type of defect

** depending configuration and active inspection features.

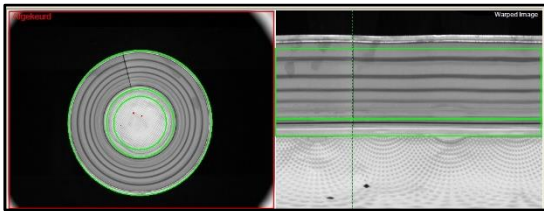
Features & functionalities

- Inspection of flange: damages, flange width and ovality/roundness.
- Inspection of bottom and inner sidewall for pollution, spots and foreign objects.
- High speed of 90.000 p/h
- Compact system
- Stainless steel design, used by can filling lines and can making lines
- Easy maintenance because of no moving parts
- Standard configuration
- Network connection
- Operator friendly user interface
- 17 inch touchscreen
- Custom language on user interface optionally possible
- Storage statistics and pictures
- Modular set-up
- Low cost of ownership
- Simple installation in the line

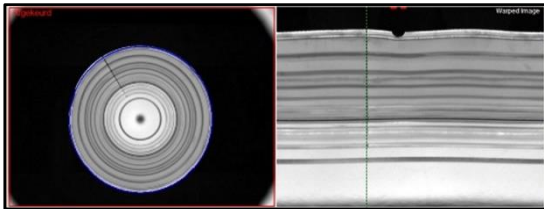
Empty Can accepted



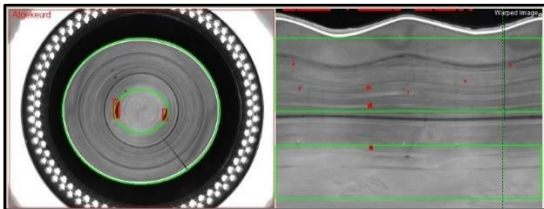
Polluted bottom (2x2mm & 1x1mm)



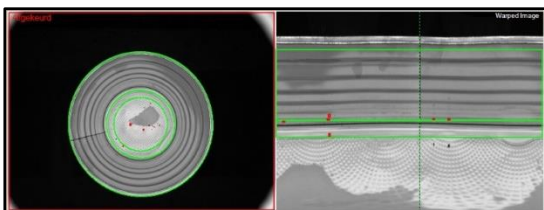
Damaged flange



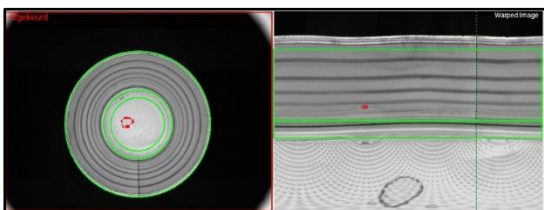
Ovality/roundness (+/-2mm diameter deviation)



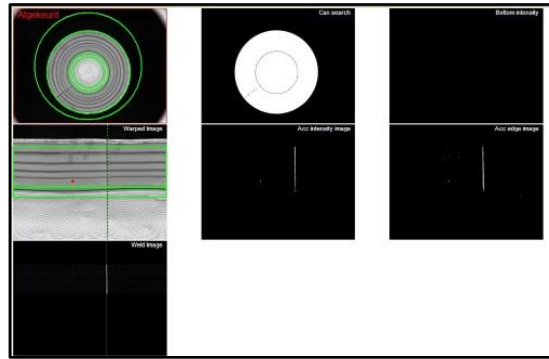
Chain oil



Transparent oil (dark edges example)



Polluted sidewall



Flange width inspection

