

NEW PRODUCT

Non-Destructive Double Seam Inspection Station

SEAMscan XTS III - Automated Virtual Seam Teardown

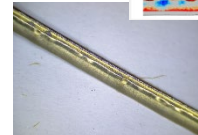
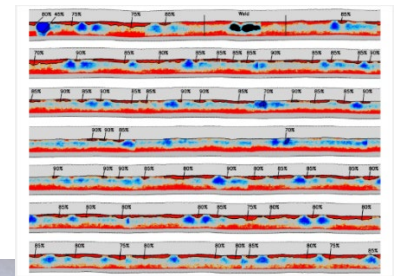
The new 3rd Generation XTS is a stand-alone measurement system that provides non-destructive, double seam inspection for aluminum or steel cans. The gauge performs both non-destructive cross-sectional measurements and a 360° tightness scan. The system provides faster inspection results, and reduced labor costs.

Cans are manually loaded into the device, then all measurements are performed automatically. Cans may be held for additional testing or be sent back into production. XTS virtual seam teardown technology provides highly accurate double seam inspection data, while dramatically reducing product spoilage.

Measures: Double Seam Inspection (Seam Height, Body Hook, Cover Hook, Overlap, Seam Gap, % Body Hook Butting) and Wrinkle Rating (% Tightness)



SEAMscan XTS III



New wrinkle visualization

Benefits of XTS Technology

- Faster and safer than conventional cross-sectional methods
- No product spoilage
- Proven and patented technology
- 360° measurement
- Complete tightness scan
- Operator independent
- World class R&R
- Data sent automatically to Visionary QC™ or other data acquisition and SPC reporting software

WWW.CMC-KUHNKE.COM

GERMANY

Tel. +49 30-2300-66-0
sales@cmc-kuhnke.de

UNITED STATES

Tel. +1 518-694-3310
sales@cmc-kuhnke.com

MEXICO

Tel. +52 55 4203 6820
sales@cmc-kuhnke.com.mx

CHINA

Tel. +400-821-0694
info.china@industrialphysics.com

NEW with the XTS III



- **Improved handling and increased versatility, speed and precision**, enabled by new generation image processing
- **New faster and high accuracy** dosage x-ray exposing system
- Higher voltage and improved exposure control allows **wider range of can types**
- **Easy to set up and use through simplified user interface**
- **Large touchscreen** for controlling the gauge and the data
- **Compact design** now with integrated PC - no external connections, only power cable required
- **Simplified user interface** and enhanced presentation
- **New intuitive wrinkle visualization**
- **Enhanced multi diameter quick can clamp** reliably handles a wider range of can sizes and types
- **Improved maintenance** – 270° access for maintenance and cleaning
- **Easy to clean** with added drainage

Other Features

- Automatic wrinkle identification
- Automatic Dimple Detection
- Automatic tab detection
- Automatic weld-seam detection
- Excellent X-Ray-shielding (TÜV Rheinland tested and certified to < 0.1 mSv per year)
- Easy to use calibration / verification mode (with calibration piece)
- Includes Visionary QC™ SPC Software
 - Easy-to-use Statistical Process Control for quick analysis of can inspection data
 - Flexible, secure database
 - Intuitive inspection reports may be shared and exported
 - Track trends and statistics with SPC Graph

Technical Details

Diameter Range:	50-153 mm (200 to 603) or 40-127 mm (109 to 502)
Characteristics Measured:	Seam Height, Body Hook, Cover Hook, Overlap, Seam Gap, % Body Hook Butting, % Wrinkle Rating (% Tightness). 360° Scan for tightness and amplitude
Max Height:	246mm / 9.69" (911)
Measurement Units:	In, mm, %
Electrical Power Required:	100-240VAC, 50/60 Hz
Max Measurement Positions:	Virtual Seam™: Up to 99 positions around the can, Virtual Teardown™ (Wrinkle): 360
Operating Dimensions:	Width: 1240mm (48,6") and with open door: 1650mm (65") Depth: 780mm (30,7") Height: 850mm (33,5")
Resolution:	Virtual Seam™: ±0.003mm, Virtual Teardown™ (Wrinkle): 1%, Graphical: 5%
Languages:	English, German, Chinese, French, Italian, Polish, Russian, Japanese, Hungarian, Latvian, Portuguese, Thai, Dutch, Spanish. Other languages available upon request